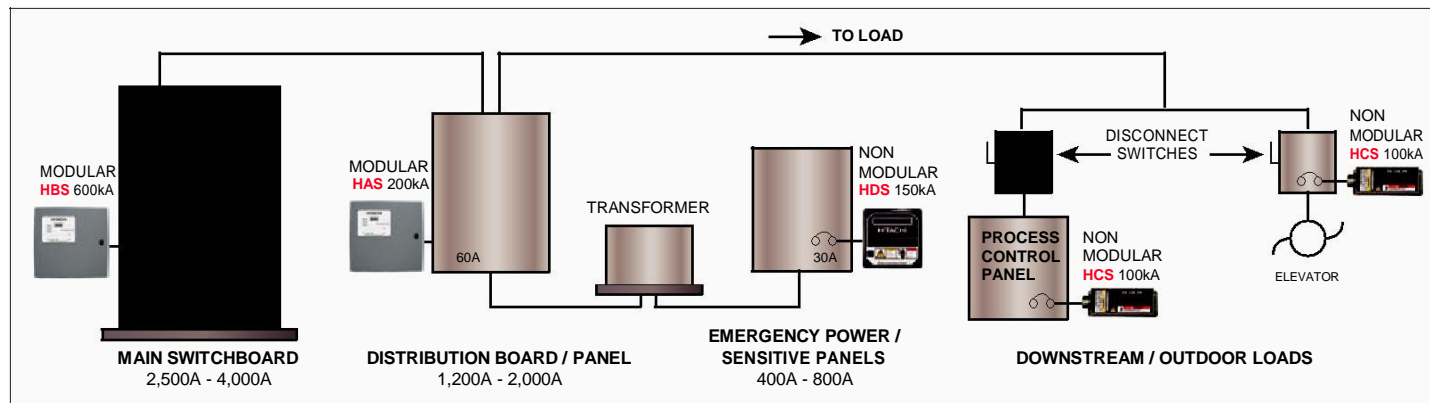
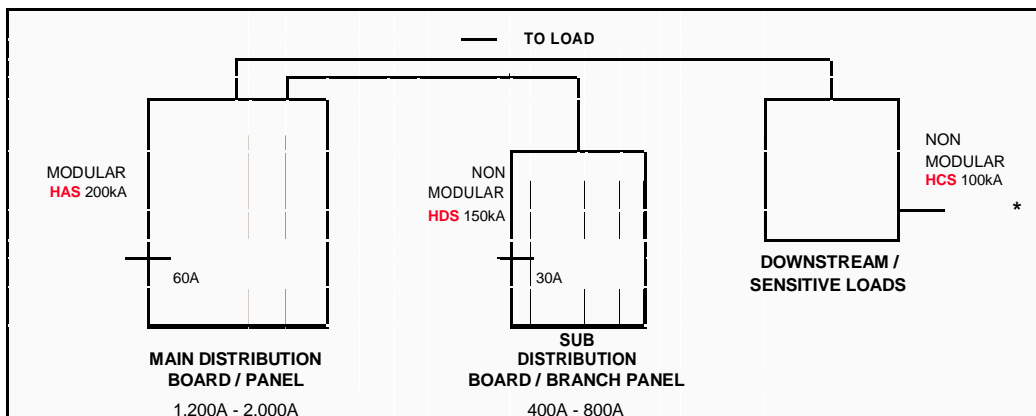


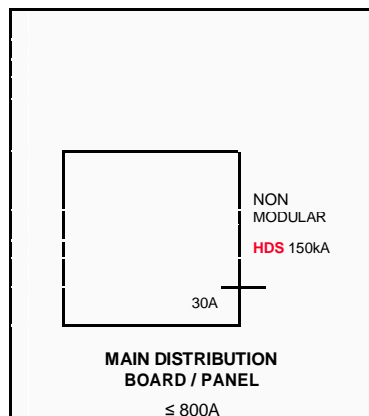
## Large Service 2500 - 4000A



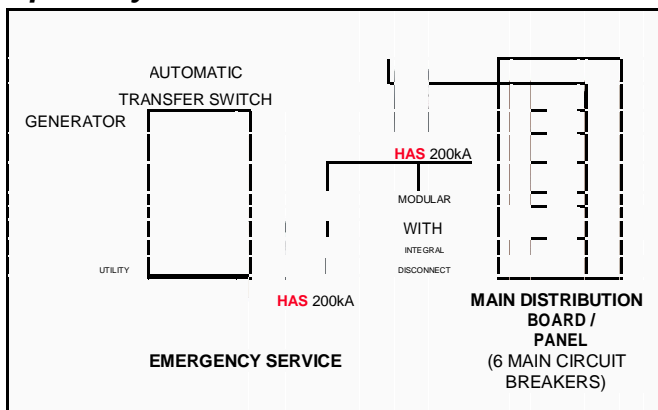
## Medium Service 1200 - 2000A



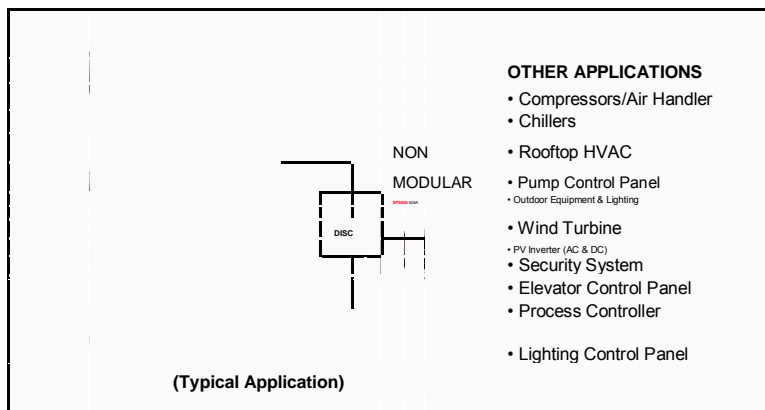
## Small Service <800A



## Specialty Service



## Outdoor / Miscellaneous



### OTHER APPLICATIONS

- Compressors/Air Handler
- Chillers
- Rooftop HVAC
- Pump Control Panel
- Outdoor Equipment & Lighting
- Wind Turbine
- PV Inverter (AC & DC)
- Security System
- Elevator Control Panel
- Process Controller
- Lighting Control Panel

Modular - Serviceable and replaceable subassembly componentry.

# SURGE PROTECTION DEVICES

UL 1449 Third Edition Listed

**HITACHI**  
Inspire the Next

## SPS HBS Series

2500A - 4000A



- 400 - 1000kA per phase
- Type 1 SPD, 200kA SCCR
- 20kA  $I_n$  (for UL 96A), ALL Mode, EMI/RFI Filtering
- **Recommend:** 16 mm<sup>2</sup> (#6 AWG), 60A OCPD / Circuit Breaker
- **Standard:** Disconnect Switch
- **Optional:** Surge Counter

## SPS HAS Series

1200A - 2000A



- 300 - 500kA per phase
- Type 1 SPD, 200kA SCCR
- 20kA  $I_n$  (for UL 96A), ALL Mode, EMI/RFI Filtering
- **Recommend:** 16 mm<sup>2</sup> (#6 AWG), 60A OCPD / Circuit Breaker
- **Optional:** Disconnect Switch, Surge Counter

## SPS HDS Series

400A - 800A



- 100 - 200kA per phase
- Type 1 SPD, 200kA SCCR
- 20kA  $I_n$  (for UL 96A), ALL Mode, EMI/RFI Filtering
- **Recommend:** 10mm<sup>2</sup> (#8 AWG), 40A OCPD / Circuit Breaker

## SPS HCS Series

200A - 400A



- 100kA per phase
- Type 1 SPD, 200kA SCCR
- 20kA  $I_n$  (for UL 96A), ALL Mode
- **Included:** 914.4mm (3 feet) of 6mm<sup>2</sup> (#10 AWG)
- **Recommend:** 30A OCPD / Circuit Breaker

## SPS50A Series

< 200A



- 50kA per phase
- Type 1 SPD, 200kA SCCR
- 20kA  $I_n$  (for UL 96A), L-N Mode
- **Included:** 6mm<sup>2</sup> (#10 AWG)
- **Recommend:** 30A OCPD / Circuit Breaker
- **Optional:** N-G & L-G



### SINAR INTI TEKNOLOGI

Jakarta: Mall Mangga Dua Square Lt. 1 Blok A No. 53-54, Jl. Gunung Sahari Raya 1 Jakarta Utara. Telp (021) 98003298 | 70503230  
Surabaya: Jl. Manyar Jaya 1 No. 32, Surabaya. Telp (031) 5926097 | 5913433